

# MONTHLY MEMBERSHIP PROGRESS REPORT

District 14 T

Results as of: 5/31/2024

GMT:

LOCATION PENNSYLVANIA

GMT CA

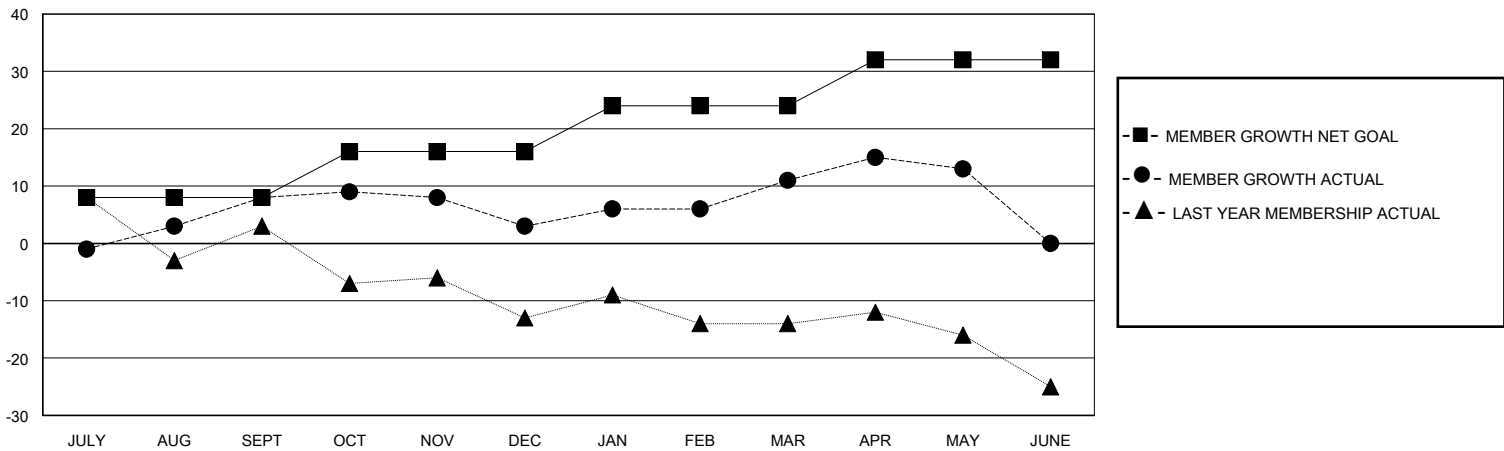
| Clubs                 |               |           |               |
|-----------------------|---------------|-----------|---------------|
| RESULTS FOR 2023-2024 |               |           |               |
| QUARTER               | NEW CLUB GOAL | NEW CLUBS | DROPPED CLUBS |
| JULY/AUG/SEPT         | 0             | 0         | 0             |
| OCT/NOV/DEC           | 0             | 0         | 0             |
| JAN/FEB/MAR           | 0             | 0         | 0             |
| APR/MAY/JUNE          | 1             | 0         | 0             |

| Members               |                        |                      |  |
|-----------------------|------------------------|----------------------|--|
| RESULTS FOR 2023-2024 |                        |                      |  |
| QUARTER               | MEMBER GROWTH NET GOAL | MEMBER GROWTH ACTUAL | DROPPED MEMBERS ACTUAL (including transfers) |
| JULY/AUG/SEPT         | 8                      | 33                   | 19   |
| OCT/NOV/DEC           | 8                      | 17                   | 20   |
| JAN/FEB/MAR           | 8                      | 26                   | 17   |
| APR/MAY/JUNE          | 8                      | 13                   | 11   |

GOALS AND ACTUAL NEW CLUBS CUMULATIVE



GOALS AND ACTUAL MEMBERS CUMULATIVE



|                        |   |                                     |
|------------------------|---|-------------------------------------|
| DROPPED CLUBS: 0       | 25 CLUBS OF 37 ADDED 1 OR MORE NEW MEMBERS                | <b>GENDER DISTRIBUTION</b>          |
|                        |   | MALE 790 (67.01%)                   |
|                        |   | FEMALE 389 (32.99%)                 |
| <b>DROPPED MEMBERS</b> | <a href="#">CLICK HERE FOR CUMULATIVE MEMBERSHIP DATA</a> | TOTAL FAMILY UNIT MEMBERS 314       |
| DECEASED 18            |   | FAMILY MEMBERS PAYING HALF DUES 162 |
| CLUB CANCELLED 0       |   |                                     |
| OTHER 49               |   |                                     |
| <b>TOTAL 67</b>        |   |                                     |